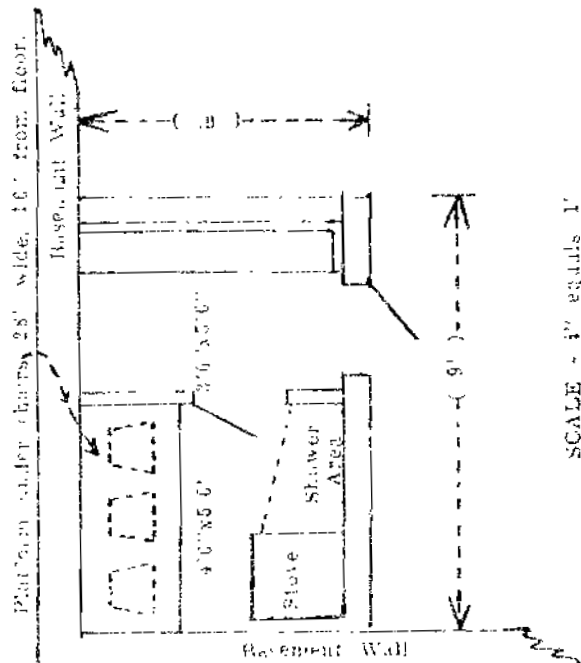


Easy Do-It-Yourself Sauna for Basement



Materials

- 80 sq. ft. 2" Fiberglass Insulation, 16" (Ceiling)
- 100 sq. ft. 2" Fiberglass Insulation, 2" (Walls)
- 2 pcs. 2x4x16 (Plates)
- 2 pcs. 2x4x12
- 14 pcs. 2x4x14 (Studs) Frame 24" O. C.
- 42 Lin. 2x4 Nailers for Paneling)
- 400 ft. Pine, Western Cedar or Redwood Paneling (Ceilings and Framed Walls)
- Other materials may be used in place of paneling, such as exterior plywood, stonewall board, tempered masonite, etc., but framing should be 15" O. C.
- 2 pcs. 1x6x16 (2 Door Frames)
- 4 pcs. 1x3x16 (2 Door Casings)
- 32 ft. Door Stop
- 40 bd. ft. 1x4 C. M. (to make 2/0x6/6 Drs.)
- 2 pr. 4" Tee Hinges
- 1 pc. 2x10x16 (Seat in Dressing Room)
- 1 pc. 2x10x14 (Cut to three pcs. for chair) platform in wash room)

"Sauna" in Home Same as Bath Room

"Sauna" in Corner of Basement

Only 54 sq. ft. required in a corner of your basement. Electric stove recommended. No ventilation required.

Plan may be reversed and also made larger if space is available. Minimum headroom 6'-6".

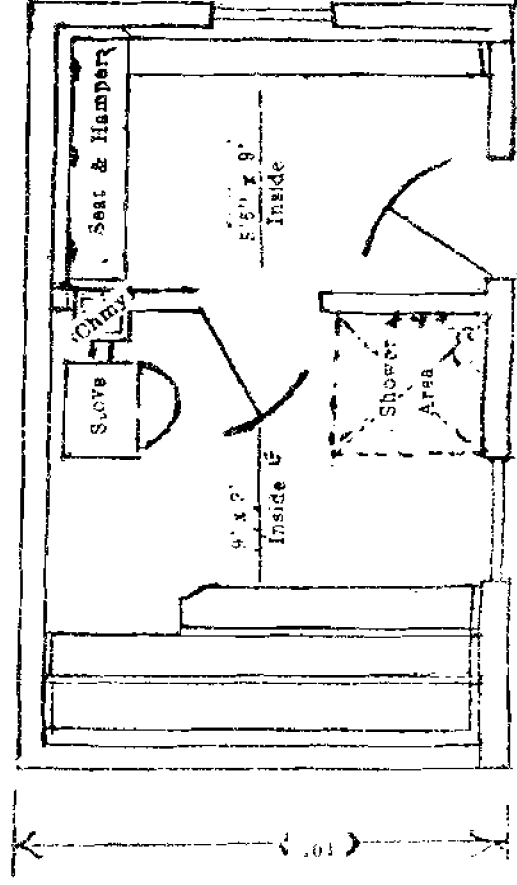
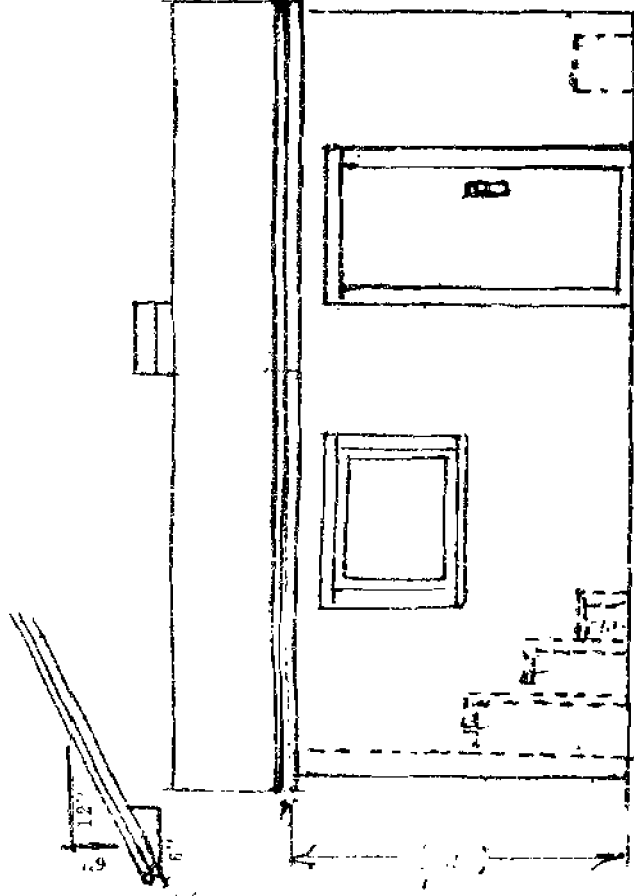
Nippa Sauna Stoves
 8862 N. US 31
 Beulah MI 49617

Phone: 231-882-7707
 Fax: 231-882-7025
 Website: www.nippa.com

Easy Do-it-Yourself Sauna for Resorts or Back Yard

Materials Complete Above Floor

- 8 pcs. 2x4x16 (3 Plates)
- 9 pcs. 2x4x10
- 42 pcs. 2x4x7 (Struds) 24" O. C.
- 10 pcs. 2x4x10 (Ceiling Joists) 24" O. C.
- 18 pcs. 2x4x7 (Rafters) 24" O. C.
- 160 Lin. Ft. 2x4 (Nailers for Paneling Gable End and Seat Standards)
- 330 Bd. Ft. Roof Sheathing
- 10 Chimney Block
- ½ Bag Mortar Cement
- 64 Lin. Ft. 1x6
- 64 Lin. Ft. 1x2
- 34 Lin. Ft. 1x4
- 2½ sq Roofing
- 2 Rolls 15# Felt
- 10 Lbs. Plastic Cement
- 2 - 2x24 Windows and Frames (Stationary or Hinged)
- 1 pc. 2x8x16 Ripped and Rabbeted for (O. S. Door Frame)
- 1 pc. 2x8x3½ ft. (Ripped for Door Sill)
- 1 pc. 5/4x4x10" } O. S. Door Casing
- 1 pc. 5/4x4x7" }
- 1 pc. 1x6x16" (Inside Door Frame)
- 16 ft. Door Step
- 72 Lin. Ft. 1x8 /Door and Window Casing)
- 1 - 2/6x6/6 O. S. Door and Hardware
- 1 - 2/6x6/6 I. S. Door and Hardware
- 520 sq. ft. 2"x24" Fiberglass Insulation
- 800 Bd. Ft. Pine, Western Cedar or Redwood Paneling. Stone wall Bd., Tempered Masonite or Exterior Plywood may be used, but change framing and insulation to 16" O. C.
- 1 pc. 2x10x10
- 30 Bd. Ft. 1x4" C. M. } Seats & Hamper in Dressing Room
- 1 pc. 2x12x10" } Seats in Washroom
- 1 pc. 2x10x16" }
- 10# 16d; 20# 8d Cem; 5# 1" Roofing Nails? Siding Nails and Finishing Nails? Wiring Materials?



SCALE: 1/4" equals 1'

Nippa Sauna Stores
8862 N. US 51
Reulah MI 49617

Phone: 231-882-7707
Fax: 231-882-7025
Website: www.nippa.com